

Appendix A – Site Location Plan and Site Layout



Proposed Redevelopment of Station Court, Cookham
Location Plan
Scale: 1:1250
SCC/PLN/100

08/10/19

Existing Block Plan



Proposed Block Plan



© This drawing is the copyright of SORBON ESTATES. It is not to be used for any other purpose without the prior written consent of SORBON ESTATES.

Notes

	Amendments	Date
B	Amendments	10/02/21
A	Amendments	08/09/20

Rev. Description

Project

Proposed Redevelopment of Station Court
Cookham

Drawing Title

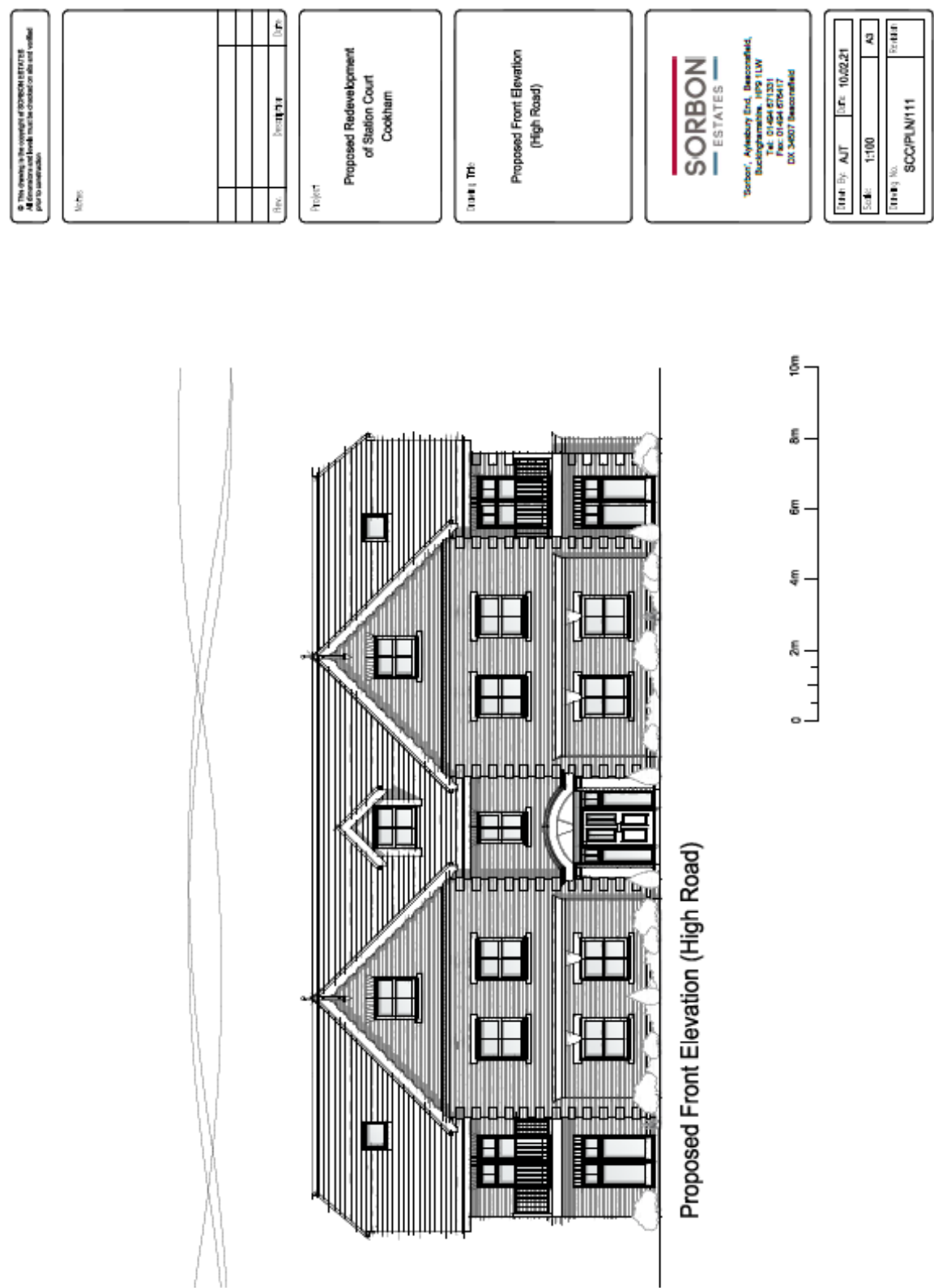
Existing and Proposed Block Plans
(Coloured)

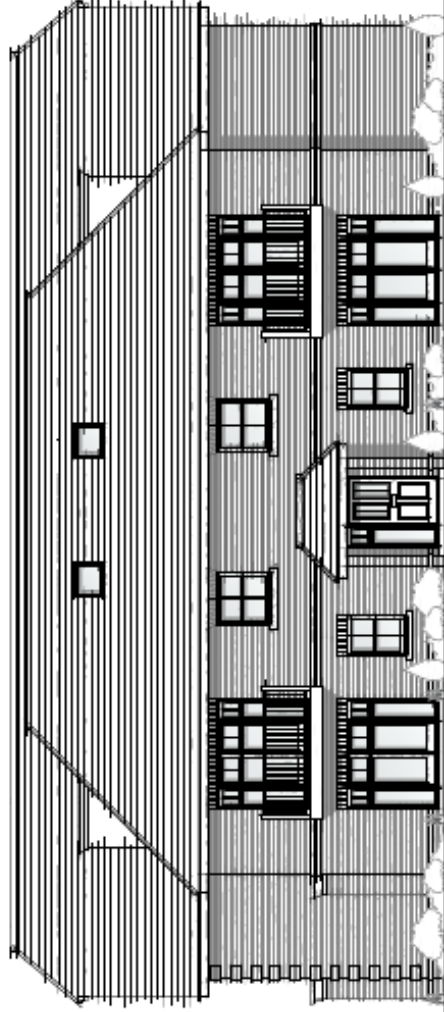
SORBON ESTATES

Sorbon, Aylesbury End, Beaconsfield,
Buckinghamshire HP8 1LW
Tel: 01494 678417
Fax: 01494 678417
DX 34507 Beaconsfield

Drawn By: AJT	Date: 08.10.19
Scale: 1:500	A3
Drawing No: SCCPLN/104	Revision: B

Appendix B – Plan and Elevations





SOCI/PLN/113

© This drawing is the copyright of SORBON ESTATES and shall remain the property of SORBON ESTATES and shall not be used for any other purpose without prior written permission.

Notes	
Rev.	Revised

Project
Proposed Redevelopment
of Station Court
Cockham

Drawn To
Proposed Side Elevation
(Peace Lane)

SORBON
ESTATES
Sorbon', Aylesbury End, Beaconsfield,
Buckinghamshire, HP9 1LW
Tel: 01494 676417
Fax: 01494 676417
DX 34607 Beaconsfield

Drawn By: AJT	Doc: 10/02/21
Scale: 1:100	A3
Drawn No:	SCCPUN112
Revised	



Proposed Side Elevation (Peace Lane)

© This drawing is the copyright of SORBON ESTATES
All dimensions and levels must be checked on site and verified
prior to construction

Notes	
Rev.	Issued
	Drawn

Project
Proposed Redevelopment
of Station Court
Cockham

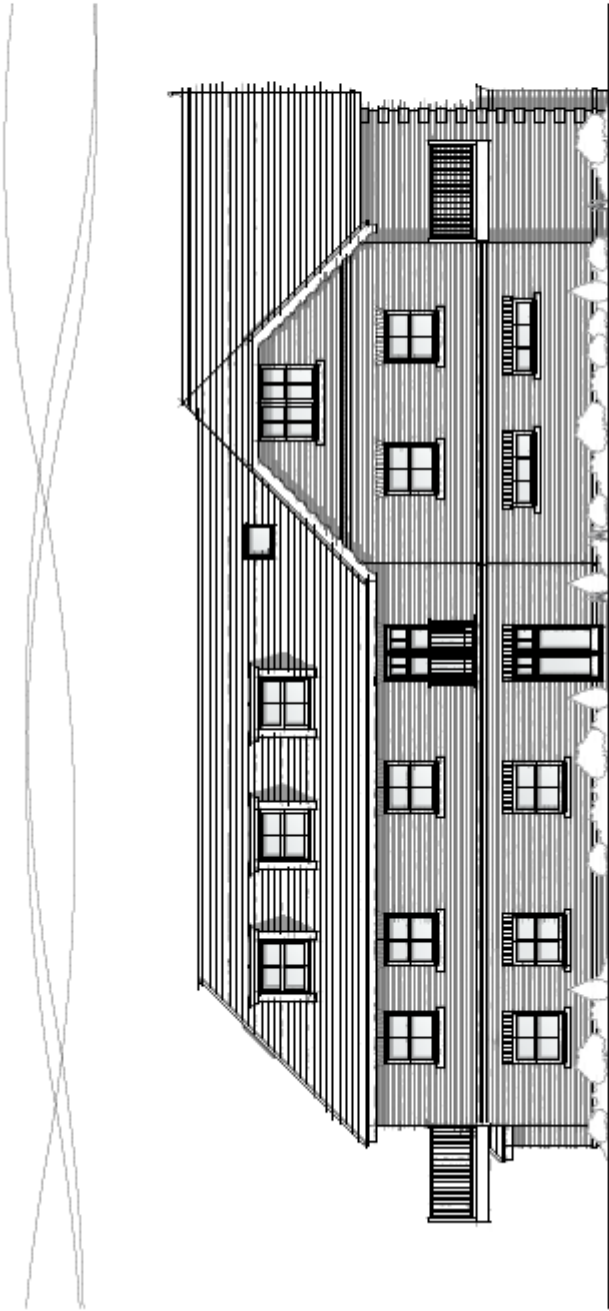
Drawn To:
Proposed Side Elevation

SORBON

ESTATES

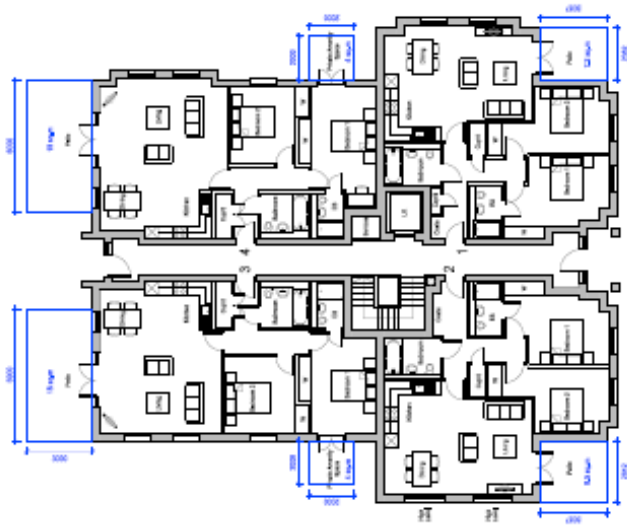
Sorbon, Aylesbury End, Beaconsfield,
Buckinghamshire, HP9 1LW
Tel: 01494 671331
Fax: 01494 676417
DX 34007 Beaconsfield

Drawn By:	AJT	Date:	10/02/21
Scale:	1:100	As	
Drawn No:	S00/PLN/114		
Drawn			

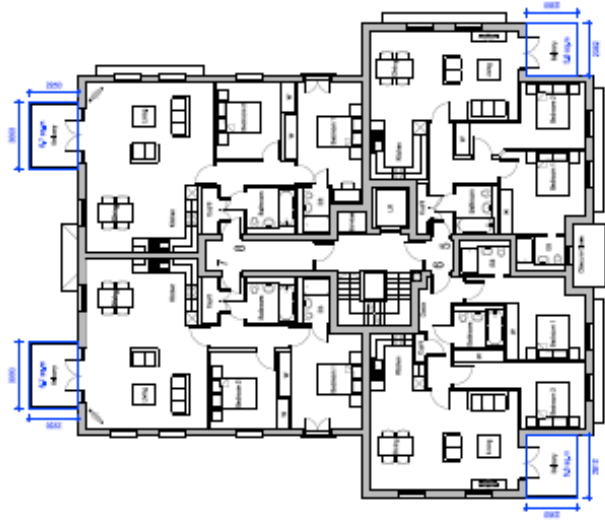


Proposed Side Elevation

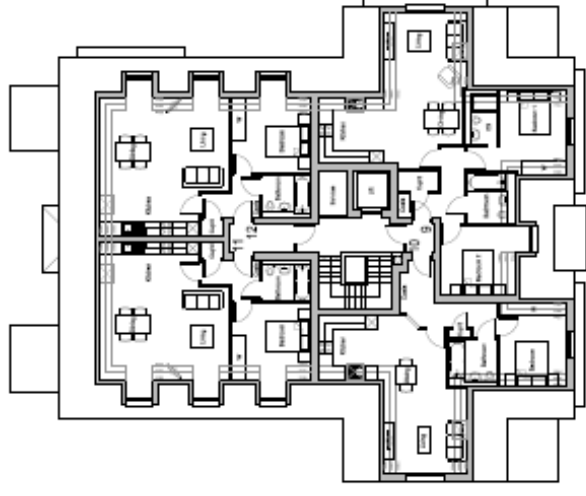




Ground Floor Plan



First Floor Plan



Second Floor Plan



1. 10/20/21 Approved
2. 10/20/21 Approved



SORBON
ESTATES

10/20/21 Approved
10/20/21 Approved
10/20/21 Approved
10/20/21 Approved

10/20/21 Approved
10/20/21 Approved
10/20/21 Approved
10/20/21 Approved

10/20/21 Approved
10/20/21 Approved
10/20/21 Approved
10/20/21 Approved

10/20/21 Approved
10/20/21 Approved
10/20/21 Approved
10/20/21 Approved

10/20/21 Approved
10/20/21 Approved
10/20/21 Approved
10/20/21 Approved

10/20/21 Approved
10/20/21 Approved
10/20/21 Approved
10/20/21 Approved

10/20/21 Approved
10/20/21 Approved
10/20/21 Approved
10/20/21 Approved

10/20/21 Approved
10/20/21 Approved
10/20/21 Approved
10/20/21 Approved

10/20/21 Approved
10/20/21 Approved
10/20/21 Approved
10/20/21 Approved

10/20/21 Approved
10/20/21 Approved
10/20/21 Approved
10/20/21 Approved

10/20/21 Approved
10/20/21 Approved
10/20/21 Approved
10/20/21 Approved

10/20/21 Approved
10/20/21 Approved
10/20/21 Approved
10/20/21 Approved

10/20/21 Approved
10/20/21 Approved
10/20/21 Approved
10/20/21 Approved

10/20/21 Approved
10/20/21 Approved
10/20/21 Approved
10/20/21 Approved

10/20/21 Approved
10/20/21 Approved
10/20/21 Approved
10/20/21 Approved